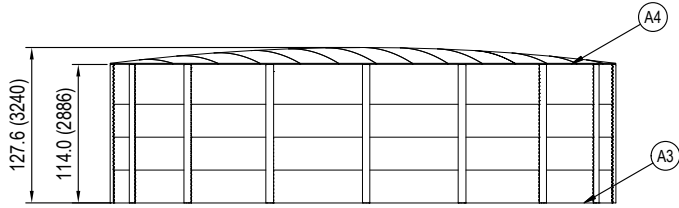


TANK PLAN
SCALE: 1:100



TANK ELEVATION
SCALE: 1:100

MANUFACTURER	AQUAMATE
MODEL	UR4D409
GROSS CAPACITY	65,000 GALLONS
NET CAPACITY	58,900 GALLONS
SHELL COLOR / FINISH	NO COLOR / GALVANIZED FINISH
SHELL MOISTURE BARRIER	20mil UNSUPPORTED PE
LINER	ENVIROLINER 20mil
ROOF SHEETING	CORRUGATED 2.67" PITCH 7/8" DEPTH

ID	ACCESSORIES
A1	30" HINGED ROOF ACCESS HATCH
A2	LIGHT DUTY LADDER - 3 RING TANK
A3	409" GEOMAT
A4	DUST AND VERMIN PROTECTION
A5	6" PVC OVERFLOW PIPEWORK
A6	MECHANICAL LEVEL GAUGE

NOTES

GENERAL

- DRAWINGS TO BE READ IN CONJUNCTION WITH DESIGN SPECIFICATION
- EFFECTIVE VOLUME CALCULATION BASED ON STORAGE LOSS BELOW INVERT OF THE LOWEST OUTLET AND FROM 1" BELOW THE INVERT / LIP OF THE LOWEST OVERFLOW

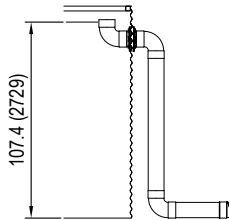
PRODUCTION

- ALL PIPEWORK & VALVES, UNLESS SPECIFIED, BY OTHERS

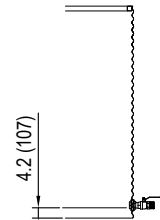
INSTALLATION

- ENSURE FIRM FLAT AND LEVEL SITE IS PROVIDED, AS PER SITE PREPARATION SPECIFICATION, PRIOR TO COMMENCING CONSTRUCTION
- ORIENTATION OF ALL FITTINGS TO BE CONFIRMED PRIOR TO INSTALLATION
- INSTALLATION TOLERANCES APPLY ON TOP OF STANDARD PRODUCTION TOLERANCES

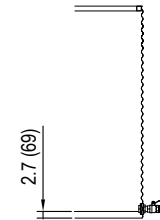
114.0	65,000
112.5	64,100
109.5	62,400
106.5	60,700
103.5	59,000
100.5	57,300
97.5	55,600
94.5	53,900
91.5	52,200
88.5	50,400
85.5	48,700
82.5	47,000
79.5	45,300
76.5	43,600
73.5	41,900
70.5	40,200
67.5	38,500
64.5	36,800
61.5	35,100
58.5	33,300
55.5	31,600
52.5	29,900
49.5	28,200
46.5	26,500
43.5	24,800
40.5	23,100
37.5	21,400
34.5	19,700
31.5	18,000
28.5	16,200
25.5	14,500
22.5	12,800
19.5	11,100
16.5	9,400
13.5	7,700
10.5	6,000
7.5	4,300
4.5	2,600
1.5	900
INCHES	US GAL
Ø409" TANK	
DEPTH CHART	



OVERFLOW
SCALE: NTS



OUTLET
SCALE: NTS



DRAIN
SCALE: NTS

ID	DESCRIPTION	SIZE	TYPE	LVL.	MATERIAL	VALVE TYPE	INTERNAL
N1	OVERFLOW	6"	SDR 35	82.5.5	ASA	-	HORIZONTAL ORIFICE
N2	INLET	20"	BASKET	114.0	PP / PE	-	UV GUARD
N3	OUTLET	2"	Sch 40	5.25	GFN	NI COATED BALL	HORIZONTAL ORIFICE
N4	DRAIN	2"	Sch 40	3.75	GFN	NI COATED BALL	HORIZONTAL ORIFICE

AQUAMATE
aquamatetanks.com
4132 Atlanta Hwy, Suite 110
#314, Loganville GA 30052
844.320.8265
info@aquamatetanks.com

DRAWN BY	INIT.	DATE	DESCRIPTION
CHECKED			
APPROVED			
ISSUED			

65,000 GALLON TANK GENERAL ARRANGEMENT
AQUAMATE TANKS
PRODUCTION PART

REV.	DESCRIPTION	DATE	DRAWN	APPROVED
2	ACCESS HATCH ORIENTATION CHANGED	23 MAY 18	ACG	---
1	FIRST ISSUE	18 NOV 16	BAF	---

INCHES (MILLIMETRES)	SCALE REFER SHEET	SHEET 1 of 1	Weight	PROJ. No. D035	DWG. No. U-10.4-1000-00002	REV. A	SHEET SIZE ANS
----------------------	-------------------	--------------	--------	----------------	----------------------------	--------	----------------